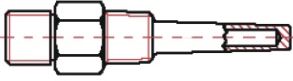


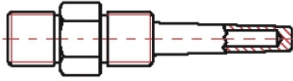
## PROCESS CONNECTIONS

The three main connection types associated with both fabricated and solid-drilled thermowells are:

### THREADED CONNECTIONS



THERMOWELL WITH  
TAPERED THREAD



THERMOWELL WITH  
PARALLEL THREAD

Standard tapered or parallel pipe threads are commonly used, particularly in low pressure applications, for simplicity and cost-effectiveness. Standard threads are NPT, BSP(Pl), and BSP(Tr) with sizes ranging from 1/2" to 2". The thread size is usually dependent on the application.



### WELDED CONNECTIONS

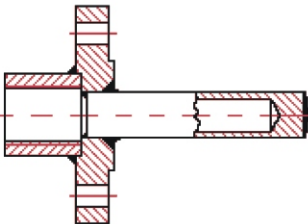


THERMOWELL WITH  
WELD-IN CONNECTION

Weld-in thermowells are normally used where process pressure and velocities are too great for flanged and threaded connections, or where long-term, inexpensive connections are required.

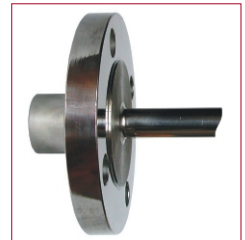


### FLANGED CONNECTIONS



THERMOWELL WITH  
FLANGED CONNECTION

With flanged connections now the petrochemical standard for all applications, PCi produces thermowells with flanges of all sizes and pressure ratings to DIN, BS, ANSI/ASME and JIS or other standards. If the flange you require is not listed on the ordering matrix overleaf, please contact us with your requirements.



### IMMERSION LENGTH

The sensing element's immersion into the process medium must be sufficient to give accurate measurement. To ensure optimum results and freedom from outside influences, the thermowell tip should be located at a point within the lower portion of the central third of the pipe line.

For tanks, the depth of immersion obviously varies considerably but, as a rule of thumb, 300mm from the outer wall will give ideal results.