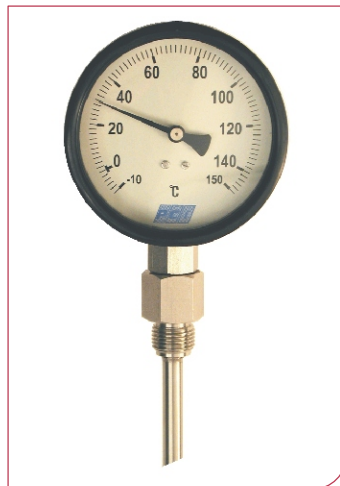
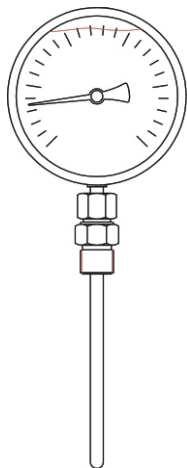


A rugged, heavy duty dial thermometer with deep-bodied stainless steel case and IP65 weather-rating, the Supernova range can be fitted with hygienic connections for use in virtually any process situation.

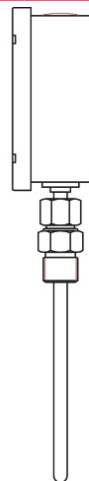
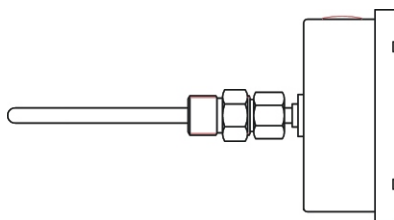


Standard Features

Case with Bayonet Bezel	stainless steel AISI 304
Sensing Element	stainless steel AISI 316
Window	glass
Range (°C)	from 0 to +650
Connection	1/2" AISI 316 adjustable
Stem Length	min. 75mm
Stem Diameter	12mm
Max. Process Temperature	650 °C
Accuracy at 20 °C	1.00%
Zero Adjustment	micro pointer



Size	ø63mm	ø100mm	ø160mm
Model			
4H - A	bottom entry		
4H - D	centre back entry		

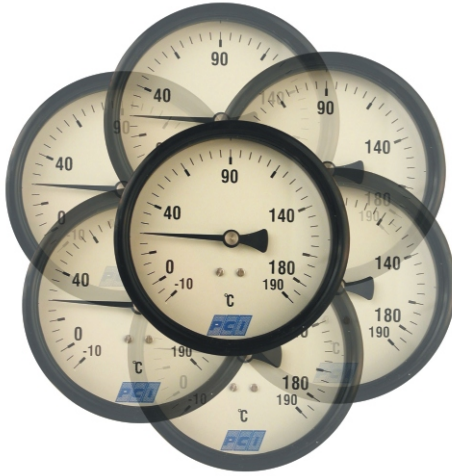


Options	ø 100mm
Case and Bezel st.st. AISI 316	*
Safety Glass Window	*
Glycerine Filling	*
Silicone Filling	*
Anti-vibration Spring	*



* = option available
 x = option unavailable
 s = standard feature

* Non-standard connection threads and dials are also available. Please contact us for more information.



ORDERING MATRIX

Locate the order code for your specification and enter it into the appropriate box. See the Thermometers introduction for more information about each option.

HEAD DIAMETER

- A:** 63mm
- B:** 100mm
- C:** 160mm

STEM LENGTH

- A:** 50mm (2") **D:** 300mm (12")
- B:** 100mm (4") **E:** 450mm (18")
- C:** 150mm (6")

WINDOW

- A:** Standard
- B:** Safety Glass

STEM DIAMETER

- 1:** Standard
- 2:** 6mm
- 3:** 8mm
- 4:** 10mm
- 5:** 12mm

RANGE

- C1 - C15**
- D1 - D13**
- F1 - F8**

HEAD FILL

- 1:** Dry
- 2:** Glycerine
- 3:** Silicone

CASE & BEZEL

- 1:** Standard
- 2:** St. Steel 316

QUANTITY

MOUNTING

- 1:** A
- 2:** D

MODEL NO

4N

→ → → → → → → → → →

→ → → → → → → → → →

Can be fitted with

HC

TW

Select the component you want to have connected to this thermometer and write in the complete order number in the empty matrix above. Together with the thermometer order number this completes the specifications for your instrument.