



TetroPress 400

FULL SAFETY PATTERN PRESSURE GAUGE

Model No.: TP400

Complying with all the requirements of EN 837, the PCI **TetroPress 400** range of safety pattern gauges can be used in situations where safety considerations are paramount. Of stainless steel construction the gauges have a full blow-out safety system using an internal baffle wall which significantly reduces danger in extreme conditions.



Model	ø 100mm	ø 160mm
TP 400 A	bottom	
TP 400 D	eccentric back	
TP 400 C	back flange for wall mounting	

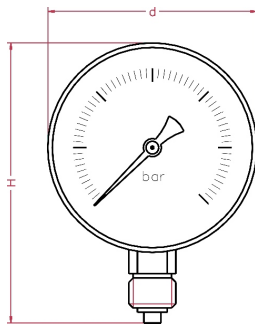
Standard Features:

Gauge Diameter	ø 100mm	ø 160mm
case and bayonet bezel	stainless steel	
bourdon tube system	stainless steel	
full blow-out back	internal baffle wall	
pointer	adjustable with slotted bush	
window	safety glass	
range in bar or equivalent	-1/0 ... 0/600	
thread bsp - npt - bspt	1/2"	1/2"
max. process temperature	200 °C	
accuracy at 20 °C	1.00%	1.00%

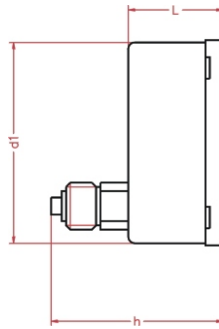
OPTIONS	ø 100mm	ø 160mm
glycerine fill	**	**
silicone fill	**	**
micro-adjustable pointer	*	*
red pointer on dial	*	*
wetted parts Monel 400	*	*
accuracy 0.5% at 20 °C	*	*

* = option available
 ** = option unavailable in
TP 400 D model with back
 entry connection

www.pci-instruments.com..... +44 (0) 1704 509090 sales@pci-instruments.com.....



TYPE A



TYPE D - eccentric back

see section on connection positions for more details

Dimensions	ø 100mm	ø 160mm
d in mm	110	160
d1 in mm	100	149
L in mm	61	64
H in mm	142	200
h in mm	104	107
weight in kg	0.65	1.2



ORDERING MATRIX ~ TP400

Locate the order code for your specification and enter it into the appropriate box. See the above tables and the pressure codes reference section in the introduction for more details. Please note that some options may not be available with all models.

GUAGE SIZE
1: 100mm
2: 160mm

WETTED PARTS
1: Standard
2: Monel 400

POINTER
1: Standard
2: Red on dial
3: Adjustable

FILL
D: Dry
G: Glycerine
S: Silicone 200

QUANTITY

MODEL NO.
TP400 A
TP400 D
TP400 C

PRESSURE RANGE
B0 - BN
P0 - PN
R0 - RN
K0 - KC

PROCESS CONNECTION
1: 1/2" BSP Male
2: 1/2" NPT Male
3: 1/2" BSP.T Male

ACCURACY
A: Standard
B: 0.5% at 20°C

CUSTOM LOGO
N: no
Y: yes

Ordering matrix flow diagram showing 10 sequential boxes for inputting specifications.

Can be fitted with

DS FS EC

If you want this gauge to be fitted with any of these process components, go to the relevant section of the catalogue and copy your gauge's order number onto the appropriate data sheet. Then simply add the specifications for your component.