



TetroPress 320

STANDARD RANGE PRESSURE GAUGE

Model No.: TP320

The PCi **Tetropress 320** range of all stainless steel, direct-mounting pressure gauges with crimped bezel are ideal for general industrial use. Gauge heads may be glycerine-filled to minimise pointer flutter caused by vibration and pressure pulsation.



Model	ø 63mm	ø 100mm
TP320 A	bottom	
TP320 DC	centre back	
TP320 DE	eccentric back	
TP320 C	back flange for wall mounting	
TP320 B	U-bracket for panel mounting	
TP320 E	front flange for panel mounting	

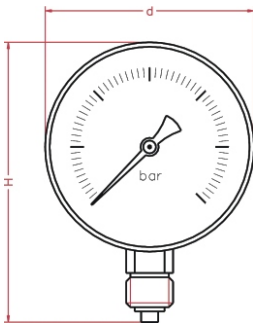
Standard Features:

Gauge Diameter	ø 63mm	ø 100mm
case with crimped bezel	stainless steel	
bourdon tube system	stainless steel	
window	plexiglas	plexiglas
range in bar or equivalent	-1/0 0/600	-1/0 0/600
thread bsp - npt - bspt	1/4"	1/2"
max. process temperature	200°C	
accuracy at 20 °C	1.60%	1.60%

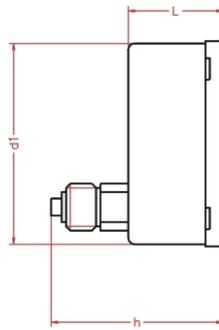
OPTIONS	ø 63mm	ø 100mm
glass window	*	*
3/8" connection	x	*
glycerine fill	*	*
silicone fill	*	*
red pointer on dial	*	*

* = option available
 x = option unavailable
 s = standard feature

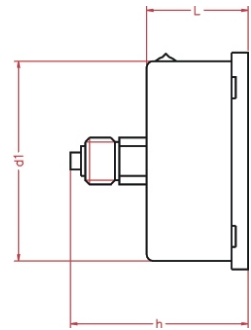
www.pci-instruments.com..... +44 (0) 1704 509090 sales@pci-instruments.com.....



TYPE A



TYPE DE - eccentric



TYPE DC - centre back

see section on connection positions for more details

Dimensions	ø 63mm	ø 100mm
d in mm	67	110
d1 in mm	63	100
L in mm	30	39
H in mm	87	140
h in mm	52	89
weight in kg	0.2	0.53



ORDERING MATRIX ~ TP320

Locate the order code for your specification and enter it into the appropriate box. See the above tables and the pressure codes reference section in the introduction for more details. Please note that some options may not be available with all models.

GAUGE SIZE

- 1: 63mm
- 2: 100mm

WINDOW

- 1: Plexiglas
- 2: Glass

POINTER

- 1: Standard
- 2: Red on dial

FILL

- D: Dry
- G: Glycerine
- S: Silicone 200

QUANTITY

MODEL NO.

- TP320 A
- TP320 DC
- TP320 DE
- TP320 C
- TP320 B
- TP320 E

PROCESS CONNECTION

SIZE

- 1: 1/4" (63mm)
- 2: 3/8" (100mm only)
- 3: 1/2" (100mm only)

TYPE

- 1: BSP
- 2: NPT

PRESSURE RANGE

- B0 - BN
- PO - PN
- RO - RN
- KO - KC

CUSTOM LOGO

- N: no
- Y: yes

Ordering matrix flow diagram showing a sequence of 10 boxes connected by arrows, representing the order code construction process.

Can be fitted with

DS FS EC

If you want this gauge to be fitted with any of these process components, go to the relevant section of the catalogue and copy your gauge's order number onto the appropriate data sheet. Then simply add the specifications for your component.