

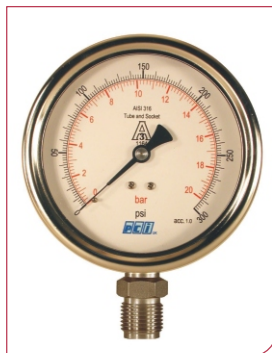


TetroPress 310

STANDARD RANGE PRESSURE GAUGE

Model No.: TP300

The PCI **Tetropress 310** range of all stainless steel, direct-mounting heavy-duty pressure gauges are class 1 approved making them ideal for general industrial use. Gauge heads may be glycerine-filled to minimise pointer flutter caused by vibration and pressure pulsation.



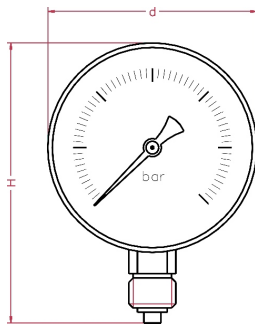
Model	ø 40mm	ø 50mm	ø 63mm
TP 310 A	bottom		
TP 310 D	eccentric back		
TP 310 C	back flange for wall mounting		
TP 310 B	U-bracket for panel mounting		
TP 310 E	front flange for panel mounting		

Standard Features:

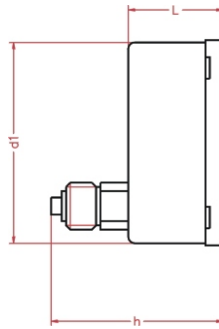
Gauge Diameter	ø 40mm	ø 50mm	ø 63mm
case with bayonet bezel	stainless steel		
bourdon tube system	stainless steel		
blow-out disk	NBR	NBR	NBR
window	plexiglas	plexiglas	plexiglas
range in bar or equivalent	-1/0 0/600	-1/0 0/600	-1/0 0/600
thread bsp - npt - bspt	1/2"	1/2"	1/2"
max. process temperature	200°C		
accuracy at 20 °C	2.00%	1.60%	1.60%

OPTIONS	ø 100mm	ø 160mm
safety glass window	S	S
reduced Bourdon tube volume	*	*
glass window	*	*
glycerine fill	*	*
silicone fill	*	*
wetted parts Monel 400	*	*
red pointer on dial	*	*
adjustable pointer with slotted bush	*	*
reducer nipple for 1/2" connection	X	X
duplex bourdon tube system (2 pointers)	*	*

* = option available
 x = option unavailable
 s = standard feature



TYPE A



TYPE D - eccentric back

see section on connection positions for more details

Dimensions	ø 40mm	ø 50mm	ø 63mm
d in mm	46	56	67
d1 in mm	41	51	63
L in mm	20	30	30
H in mm	65	75	87
h in mm	42	52	52
weight in kg	0.12	0.15	0.2



ORDERING MATRIX ~ TP310

Locate the order code for your specification and enter it into the appropriate box. See the above tables and the pressure codes reference section in the introduction for more details. Please note that some options may not be available with all models.

GUAGE SIZE

- 1: 40mm
- 2: 50mm
- 3: 63mm

WINDOW

- 1: Glass
- 2: Plexiglas
- 3: Safety Glass

POINTER

- 1: Standard
- 2: Red on dial
- 3: Adjustable
- 4: Duplex

FILL

- D:** Dry
G: Glycerine
S: Silicone 200

REDUCER

- NIPPLE**
N: No
Y: Yes

QUANTITY

- MODEL NO.**
TP310 A
TP310 D
TP310 C
TP310 B
TP310 E

- PRESSURE RANGE**
B0 - BN
P0 - PN
R0 - RN
K0 - KC

PROCESS CONNECTION

- 1: 1/2" BSP Male
- 2: 1/2" NPT Male
- 3: 1/2" BSP.T Male

BOURDON TUBE

- A:** Standard
B: Reduced

- WETTED PARTS**
A: Standard
B: Monel

CUSTOM LOGO

- N:** no
Y: yes

Ordering matrix flow diagram showing 12 sequential boxes for selecting specifications.

Can be fitted with

DS FS EC

If you want this gauge to be fitted with any of these process components, go to the relevant section of the catalogue and copy your gauge's order number onto the appropriate data sheet. Then simply add the specifications for your component.