

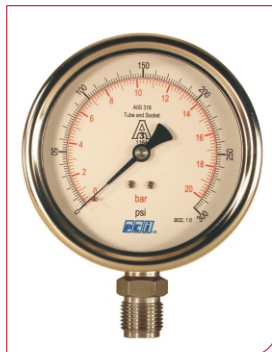


TetroPress 300

STANDARD RANGE PRESSURE GAUGE

Model No.: TP300

The PCI **Tetropress 300** range of all stainless steel, direct-mounting heavy-duty pressure gauges are class 1 approved making them ideal for general industrial use. Gauge heads may be glycerine-filled to minimise pointer flutter caused by vibration and pressure pulsation.



Model	ø 100mm	ø 160mm
TP 300 A	bottom	
TP 300 D	eccentric back	
TP 300 C	back flange for wall mounting	
TP 300 B	U-bracket for panel mounting	
TP 300 E	front flange for panel mounting	

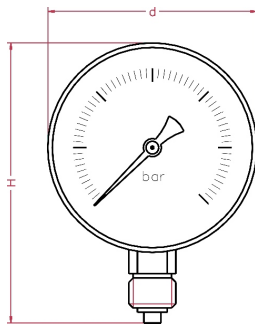
Standard Features:

Gauge Diameter	ø 100mm	ø 160mm
case with bayonet bezel	stainless steel	
bourdon tube system	stainless steel	
blow-out disk	NBR	NBR
window	plexiglas	plexiglas
range in bar or equivalent	-1/0 0/600	-1/0 0/600
thread bsp - npt - bspt	1/2"	1/2"
max. process temperature	200°C	
accuracy at 20 °C	1.00%	1.00%

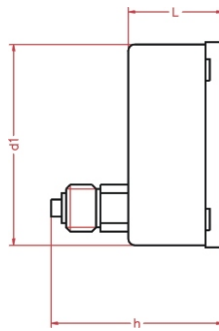
OPTIONS	ø 100mm	ø 160mm
safety glass window	S	S
reduced Bourdon tube volume	*	*
glass window	*	*
glycerine fill	*	*
silicone fill	*	*
wetted parts Monel 400	*	*
red pointer on dial	*	*
adjustable pointer with slotted bush	*	*
reducer nipple for 1/2" connection	X	X
duplex bourdon tube system (2 pointers)	*	*

* = option available
 x = option unavailable
 s = standard feature

www.pci-instruments.com..... +44 (0) 1704 509090 sales@pci-instruments.com.....



TYPE A



TYPE D - eccentric back

see section on connection positions for more details

Dimensions	ø 100mm	ø 160mm
d in mm	110	160
d1 in mm	100	149
L in mm	49	50
H in mm	140	198
h in mm	89	92
weight in kg	0.53	1.02



ORDERING MATRIX ~ TP300

Locate the order code for your specification and enter it into the appropriate box. See the above tables and the pressure codes reference section in the introduction for more details. Please note that some options may not be available with all models.

GUAGE SIZE
1: 100mm
2: 160mm

WINDOW
1: Glass
2: Plexiglas
3: Safety Glass

POINTER
1: Standard
2: Red on dial
3: Adjustable
4: Duplex

FILL
D: Dry
G: Glycerine
S: Silicone 200

REDUCER NIPPLE
N: No
Y: Yes

QUANTITY

MODEL NO.
TP300 A
TP300 D
TP300 C
TP300 B
TP300 E

PRESSURE RANGE
B0 - BN
P0 - PN
R0 - RN
K0 - KC

PROCESS CONNECTION
1: ½" BSP Male
2: ½" NPT Male
3: ½" BSP.T Male

BOURDON TUBE
A: Standard
B: Reduced

WETTED PARTS
A: Standard
B: Monel

CUSTOM LOGO
N: no
Y: yes



Can be fitted with

DS FS EC

If you want this gauge to be fitted with any of these process components, go to the relevant section of the catalogue and copy your gauge's order number onto the appropriate data sheet. Then simply add the specifications for your component.