



TetroPress 220

STANDARD RANGE PRESSURE GAUGE

Model No.: TP220

The PCi **TetroPress 220** range of crimped bezel pressure gauges with stainless steel casings and brass internals are ideal for general industrial use. Gauge heads may be glycerine-filled to minimise pointer flutter caused by vibration and pressure pulsation.



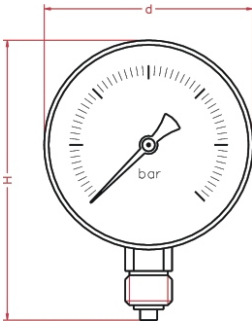
| Model | ø 63mm | ø 100mm |
|------------------|---------------------------------|---------|
| TP 220 A | bottom entry | |
| TP 220 DC | centre back | |
| TP 220 DE | eccentric back | |
| TP 220 C | back flange for wall mounting | |
| TP 220 B | U-bracket for panel mounting | |
| TP 220 E | front flange for panel mounting | |

Standard Features:

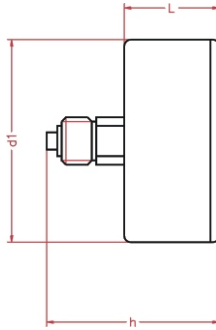
| Gauge Diameter | ø 63mm | ø 100mm |
|----------------------------|-----------------|---------|
| case with crimped bezel | stainless steel | |
| bourdon tube system | brass | |
| window | plexiglas | |
| range in bar or equivalent | -1/0 ... 0/400 | |
| thread bsp - npt - bspt | 1/4" | 3/8" |
| max. process temperature | 60 °C | |
| accuracy at 20 °C | 1.60% | |

| OPTIONS | ø 63mm | ø 100mm |
|---------------------|--------|---------|
| glass window | * | * |
| glycerine fill | * | * |
| silicone DC200 fill | * | * |
| red pointer on dial | * | * |
| 1/2" BSP connection | x | * |

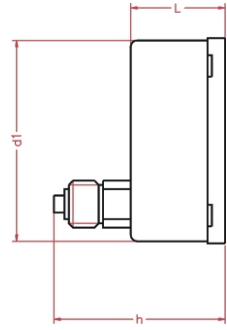
* = option available
 x = option unavailable
 s = standard feature



TYPE A



TYPE DC - centre back



TYPE DE - eccentric back

See introduction section on connection positions for more details

| Dimensions | ø 63mm | ø 100mm |
|--------------|--------|---------|
| d in mm | 67 | 110 |
| d1 in mm | 63 | 100 |
| L in mm | 30 | 39 |
| H in mm | 87 | 140 |
| h in mm | 52 | 89 |
| weight in kg | 0.2 | 0.53 |



ORDERING MATRIX ~ TP220

Locate the order code for your specification and enter it into the appropriate box. See the above tables and the pressure codes reference section in the introduction for more details. Please note that some options may not be available with all models.

GAUGE SIZE
1: 63mm
2: 100mm

WINDOW
1: Plexiglas
2: Glass

POINTER
1: Standard
2: Red on dial

FILL
D: Dry
G: Glycerine
S: Silicone 200

QUANTITY

MODEL NO.
TP220 A
TP220 DC
TP220 DE
TP220 C
TP220 B
TP220 E

PROCESS CONNECTION

SIZE
1: 1/4" (63mm)
2: 3/8" (100mm only)
3: 1/2" (100mm only)

TYPE
1: BSP
2: NPT

PRESSURE RANGE
B0 - BN
P0 - PN
R0 - RN
K0 - KC

CUSTOM LOGO
N: no
Y: yes

Ordering matrix flow diagram showing a sequence of 10 boxes connected by arrows, representing the order code structure.

Can be fitted with

DS **FS** **EC**

If you want this gauge to be fitted with any of these process components, go to the relevant section of the catalogue and copy your gauge's order number onto the appropriate data sheet. Then simply add the specifications for your component.