



TetroPress 200

STANDARD RANGE PRESSURE GAUGE

Model No.: TP200

The PCI **TetroPress 200** range of pressure gauges with stainless steel casings and brass internals are ideal for general industrial use. Gauge heads may be glycerine-filled to minimise pointer flutter caused by vibration and pressure pulsation.



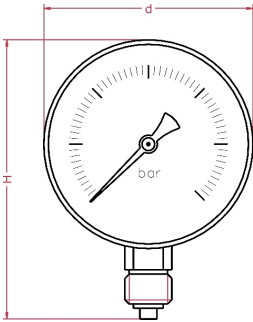
Model	ø 50mm	ø 63mm	ø 80mm	ø 100mm	ø 160mm
TP 200 A	bottom				
TP 200 D	centre back	centre back	centre back	eccentric back	eccentric back
TP 200 C	x		back flange for wall mounting		
TP 200 B	x		U-bracket for panel mounting		
TP 200 E	x		front flange for panel mounting		

Standard Features:

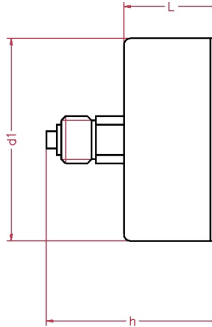
Gauge Diameter	ø 50mm	ø 63mm	ø 80mm	ø 100mm	ø 160mm
case with bayonet bezel	stainless steel				
bourdon tube system	brass				
blow-out disk	x	x	x	NBR	
window	plexiglas		glass	glass	
range in bar or equivalent	-1/0 ... 0/400				
thread bsp - npt - bspt	1/4"	1/4"	1/4"	1/2"	1/2"
filling	glycerine				
max. process temperature	60 °C				
accuracy at 20 °C	1.60%				

OPTIONS	ø 50mm	ø 63mm	ø 80mm	ø 100mm	ø 160mm
glass window	*	*	S	S	S
plexiglas window	S	S	*	*	*
glycerine fill	*	*	*	*	*
silicone DC200 fill	*	*	*	*	*
crimped bezel	*	*	*	*	X
red pointer on dial	*	*	*	*	*
reducing nipple for 1/2" connection	*	*	*	X	X

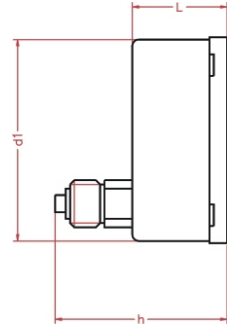
* = option available
 x = option unavailable
 s = standard feature



TYPE A



TYPE D - centre back
(ø 80mm)



TYPE D - eccentric back
(ø 100/160mm)

See introduction section on connection positions for more details

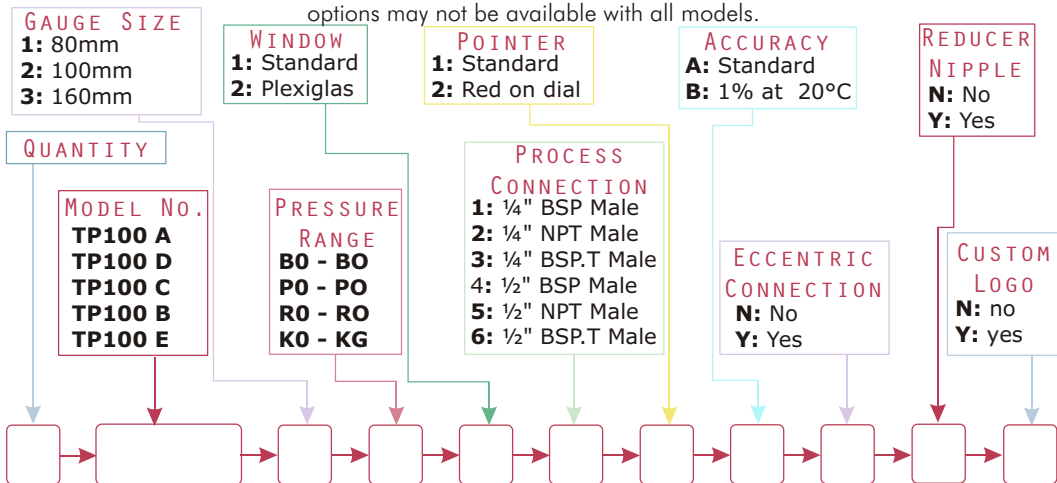
Dimensions	ø 50mm	ø 63mm	ø 80mm	ø 100mm	ø 160mm
d in mm	56	67	88	110	160
d1 in mm	51	63	80	100	149
L in mm	30	30	30	47	50
H in mm	75	87	114	140	198
h in mm	52	52	55	89	92
weight in kg	0.15	0.2	0.3	0.6	1.02

www.pci-instruments.com..... +44 (0) 1704 509090 sales@pci-instruments.com.....



ORDERING MATRIX ~ TP100

Locate the order code for your specification and enter it into the appropriate box. See the above tables and the pressure codes reference section in the introduction for more details. Please note that some options may not be available with all models.



Can be fitted with

DS

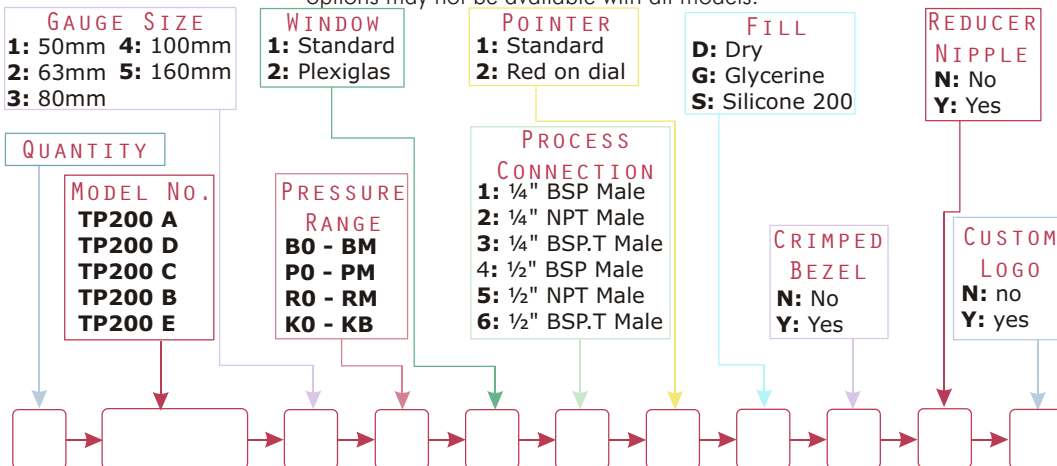
FS

If you want this gauge to be fitted with any of these process components, go to the relevant section of the catalogue and copy your gauge's order number onto the appropriate data sheet. Then simply add the specifications for your component.



ORDERING MATRIX ~ TP200

Locate the order code for your specification and enter it into the appropriate box. See the above tables and the pressure codes reference section in the introduction for more details. Please note that some options may not be available with all models.



Can be fitted with

DS

FS

If you want this gauge to be fitted with any of these process components, go to the relevant section of the catalogue and copy your gauge's order number onto the appropriate data sheet. Then simply add the specifications for your component.