



# TetroPress 100

## STANDARD RANGE PRESSURE GAUGE

**Model No.: TP100**

The PCI **TetroPress 100** range of pressure gauges with painted black steel casings and brass internals and fittings provides an inexpensive solution in non-aggressive environments below 60 °C.

Model	ø 80mm	ø 100mm	ø 160mm
<b>TP 100 A</b>	bottom		
<b>TP 100 D</b>	centre back	eccentric back	eccentric back
<b>TP 100 C</b>	back flange for wall mounting		
<b>TP 100 B</b>	U-bracket for panel mounting		
<b>TP 100 E</b>	front flange for panel mounting		

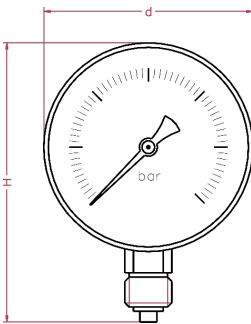


### Standard Features:

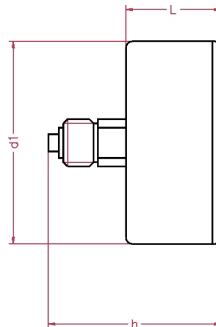
Gauge Diameter	ø 80mm	ø 100mm	ø 160mm
black case with bezel with 2 screws	painted steel		
black case with slim bayonet bezel		painted steel	painted steel
bourdon tube system	brass		
window	glass		
range in bar or equivalent	-1/0 .... 0/400	-1/0 .... 0/1000	-1/0 .... 0-1000
thread bsp - npt - bspt	1/4"	1/2"	1/2"
max. process temperature	60 °C		
accuracy at 20 °C	1.60%		

OPTIONS	ø 80mm	ø 100mm	ø 160mm
plexiglas window	*	*	*
red pointer on dial	*	*	*
red pointer in plexiglas window	*	*	*
accuracy 1% at 20 °C	x	*	*
eccentric connection	*	s	s
reducer nipple for 1/2" connection	*	x	x

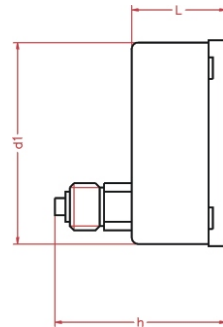
\* = option available  
 x = option unavailable  
 s = standard feature



TYPE A



TYPE D - centre back  
(ø 80mm)



TYPE D - eccentric back  
(ø 100/160mm)

see section on connection positions for more details

Dimensions	ø 80mm	ø 100mm	ø 160mm
d in mm	<b>80</b>	<b>101.5</b>	<b>161</b>
d1 in mm	<b>79</b>	<b>99</b>	<b>159</b>
L in mm	<b>31</b>	<b>50</b>	<b>50</b>
H in mm	<b>114</b>	<b>140</b>	<b>205</b>
h in mm	<b>65</b>	<b>83</b>	<b>83</b>
weight in kg	<b>0.3</b>	<b>0.6</b>	<b>0.9</b>

www.pci-instruments.com..... +44 (0) 1704 509090 ..... sales@pci-instruments.com.....



# ORDERING MATRIX ~ TP100

Locate the order code for your specification and enter it into the appropriate box. See the above tables and the pressure codes reference section in the introduction for more details. Please note that some options may not be available with all models.

### GAUGE SIZE

- 1: 80mm
- 2: 100mm
- 3: 160mm

### WINDOW

- 1: Standard
- 2: Plexiglas

### POINTER

- 1: Standard
- 2: Red on dial

### ACCURACY

- A: Standard
- B: 1% at 20°C

### REDUCER

- NIPPLE
- N: No
- Y: Yes

### QUANTITY

### MODEL NO.

- TP100 A
- TP100 D
- TP100 C
- TP100 B
- TP100 E

### PRESSURE RANGE

- B0 - BO
- PO - PO
- RO - RO
- KO - KG

### PROCESS CONNECTION

- 1: 1/4" BSP Male
- 2: 1/4" NPT Male
- 3: 1/4" BSP.T Male
- 4: 1/2" BSP Male
- 5: 1/2" NPT Male
- 6: 1/2" BSP.T Male

### ECCENTRIC CONNECTION

- N: No
- Y: Yes

### CUSTOM LOGO

- N: no
- Y: yes

Ordering matrix flow diagram for TP100 gauges, showing 10 sequential boxes for selection.

Can be fitted with

DS

FS

If you want this gauge to be fitted with any of these process components, go to the relevant section of the catalogue and copy your gauge's order number onto the appropriate data sheet. Then simply add the specifications for your component.



# ORDERING MATRIX ~ TP200

Locate the order code for your specification and enter it into the appropriate box. See the above tables and the pressure codes reference section in the introduction for more details. Please note that some options may not be available with all models.

### GAUGE SIZE

- 1: 50mm 4: 100mm
- 2: 63mm 5: 160mm
- 3: 80mm

### WINDOW

- 1: Standard
- 2: Plexiglas

### POINTER

- 1: Standard
- 2: Red on dial

### FILL

- D: Dry
- G: Glycerine
- S: Silicone 200

### REDUCER

- NIPPLE
- N: No
- Y: Yes

### QUANTITY

### MODEL NO.

- TP200 A
- TP200 D
- TP200 C
- TP200 B
- TP200 E

### PRESSURE RANGE

- B0 - BM
- PO - PM
- RO - RM
- KO - KB

### PROCESS CONNECTION

- 1: 1/4" BSP Male
- 2: 1/4" NPT Male
- 3: 1/4" BSP.T Male
- 4: 1/2" BSP Male
- 5: 1/2" NPT Male
- 6: 1/2" BSP.T Male

### CRIMPED BEZEL

- N: No
- Y: Yes

### CUSTOM LOGO

- N: no
- Y: yes

Ordering matrix flow diagram for TP200 gauges, showing 10 sequential boxes for selection.

Can be fitted with

DS

FS

If you want this gauge to be fitted with any of these process components, go to the relevant section of the catalogue and copy your gauge's order number onto the appropriate data sheet. Then simply add the specifications for your component.