



DuraPress 100

PROCESS GAUGE WITH PHENOLIC TURRET CASING

Model No.: DP 100

A full safety pattern, 4.5 inch gauge with a highly resistant phenolic casing and an accuracy of 0.5%, the **Durapress 100** is the perfect instrument for chemically aggressive process environments.



Model	ø 4½"
DP 100 A	bottom entry
DP 100 D	eccentric back entry

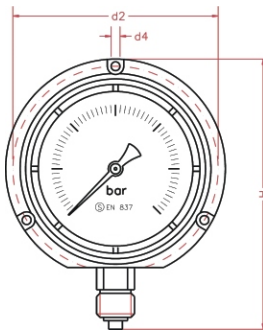
Standard Features:

Gauge Diameter	ø 4½"
case with threaded ring	phenolic, black
bourdon tube system	stainless steel
blow-out	full blow-out back and baffle wall
pointer	adjustable with slotted bush
window	hardened glass
range in bar or equivalent	-1/0 0/600
thread bsp - npt - bspt	1/2"
max. process temperature	100 °C
accuracy at 20 °C	0.50%

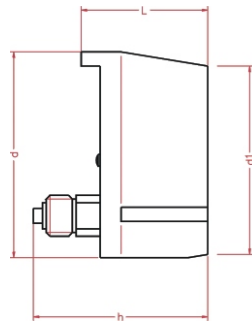
OPTIONS	ø 4½"
wetted parts Monel 400	*
wetted parts brass	*
st. st. bellows type for ranges 40-400 mbar	*
safety glass window	*
glycerine filling (bottom entry only)	*
silicone DC200 filling (bottom entry only)	*
micro-adjustable pointer	*
red pointer on dial	*

* = option available
 x = option unavailable
 s = standard feature

www.pci-instruments.com..... +44 (0) 1704 509090 sales@pci-instruments.com.....



TYPE A



TYPE D - eccentric back

see section on connection positions for more details

Dimensions	ø 4 1/2"
d in mm	148
d1 in mm	129
d2 in mm	137
d4 in mm	6
L in mm	86
H in mm	183
h in mm	130
weight in kg	0.8



ORDERING MATRIX ~ DP100

Locate the order code for your specification and enter it into the appropriate box. See the above tables and the pressure codes reference section in the introduction for more details. Please note that some options may not be available with all models.

PROCESS CONNECTION 1: 1/2" BSP Male 2: 1/2" NPT Male 3: 1/2" BSP.T Male	WINDOW 1: Standard 2: Safety Glass	FILL D: Dry G: Glycerine S: Silicone 200	BOURDON TUBE A: Standard B: Reduced	BELLOWS N: No Y: Yes
QUANTITY	PRESSURE RANGE M0 - M7 B0 - B0 P0 - P0 R0 - R0 K0 - K0	POINTER 1: Standard 2: Red on dial 3: Adjustable	WETTED PARTS A: Standard B: Monel 400 C: Brass	CUSTOM LOGO N: no Y: yes
MODEL NO. DP100-A DP100-D				
<input type="text"/>	<input type="text"/>	<input type="text"/>	<input type="text"/>	<input type="text"/>

Can be fitted with

DS

FS

EC

If you want this gauge to be fitted with any of these process components, go to the relevant section of the catalogue and copy your gauge's order number onto the appropriate data sheet. Then simply add the specifications for your component.