

CONNECTION POSITIONS

EN 837-1 outlines a number of approved connection positions for pressure gauges.

	Direct Mounting	Surface Mounting	Flush Mounting 3-hole fixing	Flush Mounting Clamp Fixing
Radial Connection	<p>Type 10</p>	<p>Type 11</p>	<p>Type 12 (not preferred)</p>	
Centre Back Connection	<p>Type 20</p>	<p>Type 21 (not preferred)</p>	<p>Type 22</p>	<p>Type 23</p>
Offset Back Connection	<p>Type 30</p>	<p>Type 31 (not preferred)</p>	<p>Type 32</p>	<p>Type 33</p>

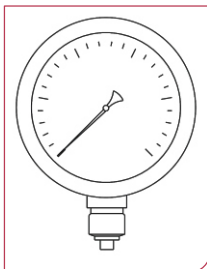
PCI can manufacture pressure gauges with each of these mounting systems. However, only the five most common mounting systems are included on the individual gauge data sheets where appropriate. For other mounting specifications please contact our technical department.

The five most common are designated A-E as below:

CONNECTION POSITIONS

TYPE A:

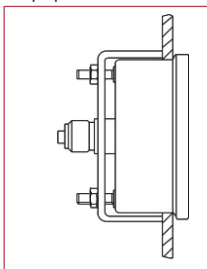
direct mounting
with bottom connection



See data sheets for bottom
connection dimensions

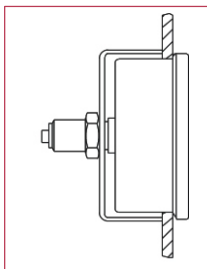
TYPE B:

U-clamp panel mounting



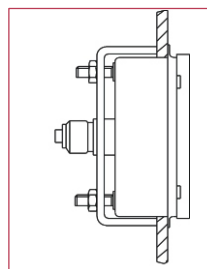
TYPE B-2

U-clamp with 2 welded
bolts on the casing, only
for centre back connection
on crimped casings



TYPE B-3

U-clamp via a nut on the
connection, for centre
back connections on
crimped casings only



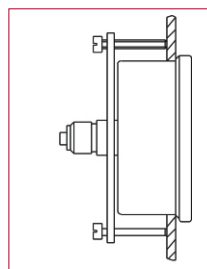
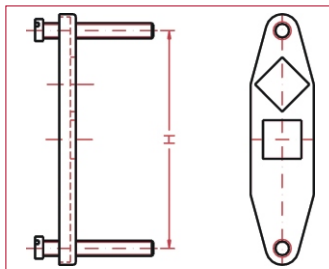
TYPE B-5

as model B-2 but for
bayonet casing

TYPE B-4

U-clamp for centre back

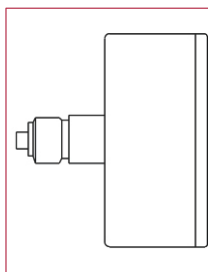
ø in mm	H
63	73
100	112
160	162



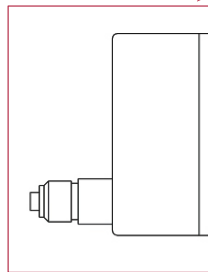
TYPE D

direct mounting
with back connection

See data sheets for
dimensions



Centre back connection



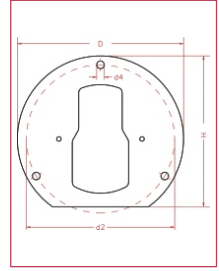
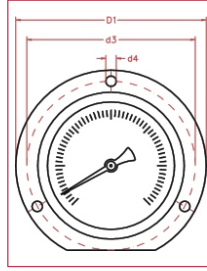
Eccentric back connection

CONNECTION POSITIONS

TYPE C

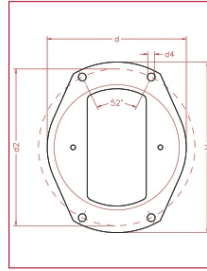
DIN back flange
wall mounting

ø (mm)	D (mm)	d2 (mm)	d4 (mm)	
40	62	51	3.5	
50	71	60	3.5	
63	85	75	3.5	
80	110	96	4.8	
100	132	116	6	
4.5"	148	137	6	
160	196	178	6	



JIS back flange

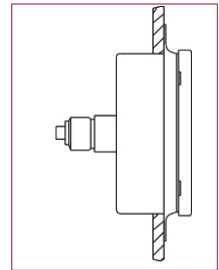
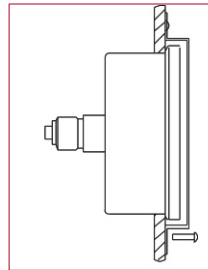
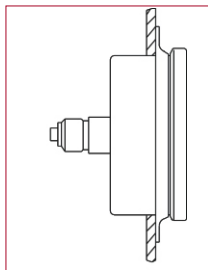
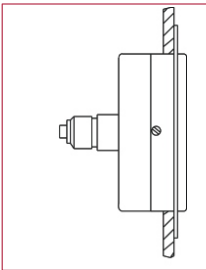
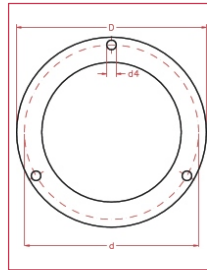
ø (mm)	H	d	d2	d4
80	98	80	88	4.8
100	127	105	115	6



TYPE E:

3-hole front flange
panel mounting

ø in mm	D	d	d4
40	62	51	3.5
50	71	60	3.5
63	85	75	3.5
80	110	96	4.8
100	132	116	6
160	196	178	6



TYPE E-1
front flange for
standard casing with
2 side screws

TYPE E-2
front flange for
crimped casing

TYPE E-3
fixing ring for crimped
casing

TYPE E-4
front flange for
bayonet casing