



BiPress 200

DIFFERENTIAL PRESSURE GAUGE

Model No.: BP 200

The **BiPress 200** is a differential pressure gauge for dry air and gas with aluminium case and a brass internal capsule system.

Model	ø 80mm
BP 100 D	back entry
BP 100 A	bottom entry

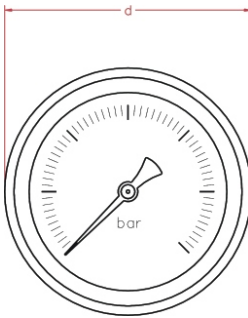
Standard Features:

Gauge Diameter	ø 80mm
case and bayonet bezel	aluminium
capsule system	brass
window	10 mm plexiglas
range in mbar or equivalent	0/ 25 0/400
process connection thread	1/4" NPT female
max. process temperature	60 °C
accuracy at 20 °C	1.60%
restrictor	in connection
static pressure	max. 2.5 bar

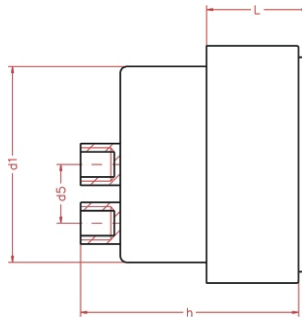


OPTIONS	ø 80mm
degrading for oxygen	*

* = option available
 x = option unavailable
 s = standard feature



TYPE D



TYPE D

See introduction section on connection positions for more details

Dimensions	ø 80mm
d in mm	90
d5 in mm	25
d1 in mm	74
L in mm	35
h in mm	81
weight in kg	0.68

www.pci-instruments.com..... +44 (0) 1704 509090 sales@pci-instruments.com.....



ORDERING MATRIX ~ BP100

Locate the order code for your specification and enter it into the appropriate box. See the above tables and the pressure codes reference section in the introduction for more details.

CONNECTION POSITION

- A:** bottom connection
- C:** back flange for wall mount
- E:** front flange for panel mount

WINDOW

- 1:** Standard
- 2:** Safety Glass

POINTER

- 1:** Standard
- 2:** Micro-adjustable

INTERNALS

- 1:** Standard
- 2:** Monel 400

QUANTITY

MODEL NO.

PROCESS CONNECTION

- B:** 1/4" BSP Female
- N:** 1/4" NPT Female
- T:** 1/4" BSP.T Female

PRESSURE RANGE

- M6 - M7**
- B9 - BG**
- P9 - PG**
- K0 - K9**

FILL

- D:** Dry
- S:** Silicone

STATIC PRESSURE

- A:** Standard
- B:** 3x F.S.D.

CUSTOM LOGO

- N:** no
- Y:** yes



Can be fitted with

DS

FS

If you want this gauge to be fitted with any of these process components, go to the relevant section of the catalogue and copy your gauge's order number onto the appropriate data sheet. Then simply add the specifications for your component.



ORDERING MATRIX ~ BP200

Locate the order code for your specification and enter it into the appropriate box. See the above tables and the pressure codes reference section in the introduction for more details.

QUANTITY

MODEL NO.

CONNECTION POSITION

- A:** bottom connection
- D:** back connection

PRESSURE RANGE

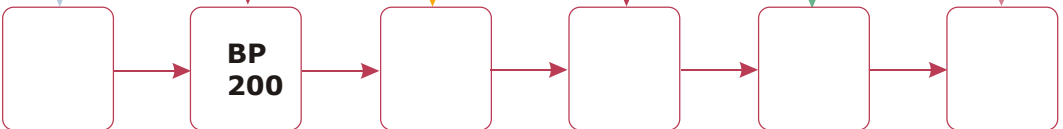
- BG - BM**
- PG - PM**
- RG - RM**
- KA - KG**

OXYGEN DEGREASING

- 1:** No
- 2:** Yes

CUSTOM LOGO

- N:** no
- Y:** yes



Can be fitted with

DS

FS

If you want this gauge to be fitted with any of these process components, go to the relevant section of the catalogue and copy your gauge's order number onto the appropriate data sheet. Then simply add the specifications for your component.