



BiPress 100

DIFFERENTIAL PRESSURE GAUGE

Model No.: BP 100

An inexpensive differential pressure gauge, the **BiPress 100** utilises a double Bourdon C-tube system to measure pressure differences between a single or double circuit in a wide variety of situations.



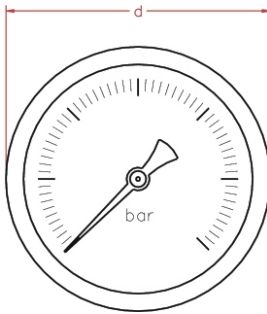
Model	ø 100mm
BP 100 A	bottom
BP 100 C	back flange for wall mounting
BP 100 E	front flange for panel mounting

Standard Features:

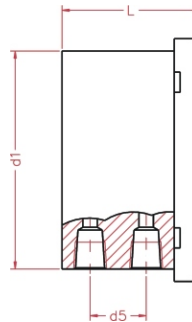
Gauge Diameter	ø 100mm
case and bayonet bezel	stainless steel
double C-tube system	stainless steel
window	glass
range in bar or equivalent	0/0.4 ... 0/25
thread bsp - npt - bspt female	1/4"
max. process temperature	120 °C
accuracy at 20 °C	1.60%
pointer	adjustable with slotted bush
static pressure	2 x full scale apart from pressure in one or both connections
indication	one pointer (differential value)

OPTIONS	ø 100mm
silicone fill	*
micro-adjustable pointer	*
safety glass window	*
static pressure 3 x fsd	*
Monel internals	*

* = option available
 x = option unavailable
 s = standard feature



TYPE A



TYPE A

See introduction section on connection positions for more details

Dimensions	ø 100mm
d in mm	118
d5 in mm	23
L in mm	64
d1 in mm	103
weight in kg	1.05

www.pci-instruments.com..... +44 (0) 1704 509090 sales@pci-instruments.com.....



ORDERING MATRIX ~ BP100

Locate the order code for your specification and enter it into the appropriate box. See the above tables and the pressure codes reference section in the introduction for more details.

CONNECTION POSITION

- A:** bottom connection
- C:** back flange for wall mount
- E:** front flange for panel mount

WINDOW

- 1:** Standard
- 2:** Safety Glass

POINTER

- 1:** Standard
- 2:** Micro-adjustable

INTERNALS

- 1:** Standard
- 2:** Monel 400

QUANTITY

MODEL NO.

PROCESS CONNECTION

- B:** 1/4" BSP Female
- N:** 1/4" NPT Female
- T:** 1/4" BSP.T Female

PRESSURE RANGE

- M6 - M7**
- B9 - BG**
- P9 - PG**
- K0 - K9**

FILL

- D:** Dry
- S:** Silicone

STATIC PRESSURE

- A:** Standard
- B:** 3x F.S.D.

CUSTOM LOGO

- N:** no
- Y:** yes



Can be fitted with

DS FS

If you want this gauge to be fitted with any of these process components, go to the relevant section of the catalogue and copy your gauge's order number onto the appropriate data sheet. Then simply add the specifications for your component.



ORDERING MATRIX ~ BP200

Locate the order code for your specification and enter it into the appropriate box. See the above tables and the pressure codes reference section in the introduction for more details.

CONNECTION POSITION

- A:** bottom connection
- D:** back connection

QUANTITY

MODEL NO.

PRESSURE RANGE

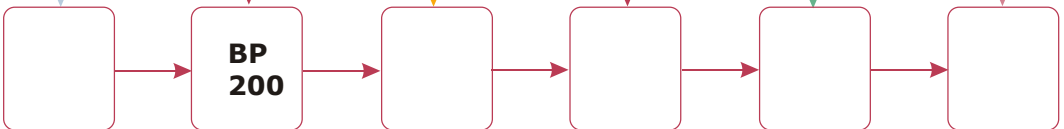
- BG - BM**
- PG - PM**
- RG - RM**
- KA - KG**

OXYGEN DEGREASING

- 1:** No
- 2:** Yes

CUSTOM LOGO

- N:** no
- Y:** yes



Can be fitted with

DS FS

If you want this gauge to be fitted with any of these process components, go to the relevant section of the catalogue and copy your gauge's order number onto the appropriate data sheet. Then simply add the specifications for your component.