



Aximax 300

LOW PRESSURE CAPSULE GAUGE

Model No.: AX 300

Constructed with stainless steel casings and internals, the **Aximax 300** range of low pressure capsule gauges provide a high quality solution to process contexts up to 200°C



Model	ø 63mm	ø 100mm	ø 160mm
AX 300 A	bottom		
AX 300 D	eccentric back		
AX 300 C	back flange for wall mounting		

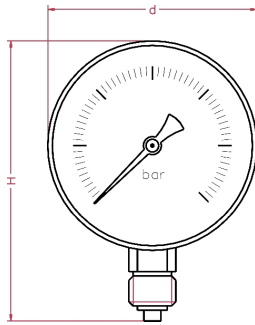
Standard Features:

Gauge Diameter	ø 63mm	ø 100mm	ø 160mm
case and bayonet bezel	stainless steel		
capsule system	brass		
blow-out disk	NBR		
window	glass		
range in mbar or equivalent	0/25 0/600		
thread bsp - npt - bspt	1/2"		
max. process temperature	80 °C		
accuracy at 20 °C	1.60%		

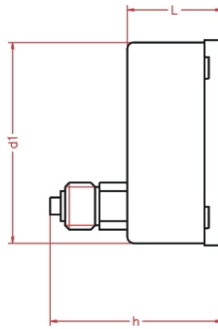
OPTIONS	ø 63mm	ø 100mm	ø 160mm
safety glass window	*	*	*
restrictor in connection	*	*	*
non standard thread	*	*	*
non standard dial	*	*	*

* = option available
 x = option unavailable
 s = standard feature

www.pci-instruments.com..... +44 (0) 1704 509090 sales@pci-instruments.com.....



TYPE A



TYPE D - eccentric back

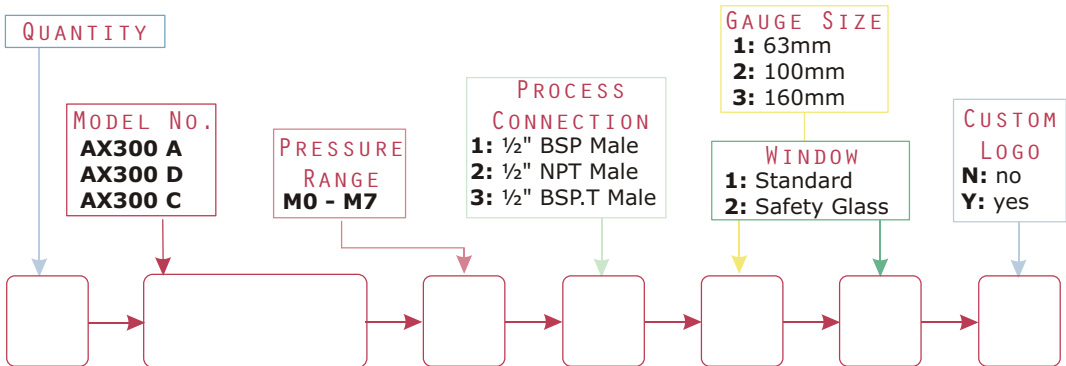
see section on connection positions for more details

Dimensions	ø 63mm	ø 100mm	ø 160mm
d in mm		110	160
d1 in mm		100	149
L in mm		49	50
H in mm		140	198
h in mm		80	88
weight in kg		0.53	1.02



ORDERING MATRIX ~ AX300

Locate the order code for your specification and enter it into the appropriate box. See the above tables and the pressure codes reference section in the introduction for more details. Please note that some options may not be available with all models.



Can be fitted with **DS** **FS** **EC**

If you want this gauge to be fitted with any of these process components, go to the relevant section of the catalogue and copy your gauge's order number onto the appropriate data sheet. Then simply add the specifications for your component.