



Aximax 100

LOW PRESSURE CAPSULE GAUGE

Model No.: AX 100

The **Aximax 100** budget range of low pressure capsule gauges come with painted black steel casings and brass internals and fittings as standard.



Model	ø 63mm	ø 80mm
AX 100 A	bottom	
AX 100 D	eccentric back	
AX 100 C	back flange for wall mounting	
AX 100 E	front flange for panel mounting	

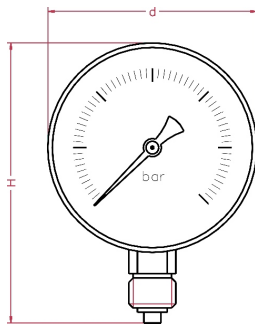
Standard Features:

Gauge Diameter	ø 63mm	ø 80mm
black case	painted steel	
capsule system	brass	
window push-in	plexiglas	
range in mbar or equivalent	0/25 0/600	
thread bsp - npt - bspt	1/4"	1/2"
max. process temperature	45 °C	
accuracy at 20 °C	1.60%	

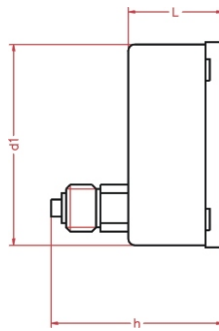
OPTIONS	ø 63mm	ø 80mm
safety glass window	*	x

* = option available
 x = option unavailable
 s = standard feature

www.pci-instruments.com..... +44 (0) 1704 509090 sales@pci-instruments.com.....



TYPE A



TYPE D - eccentric back

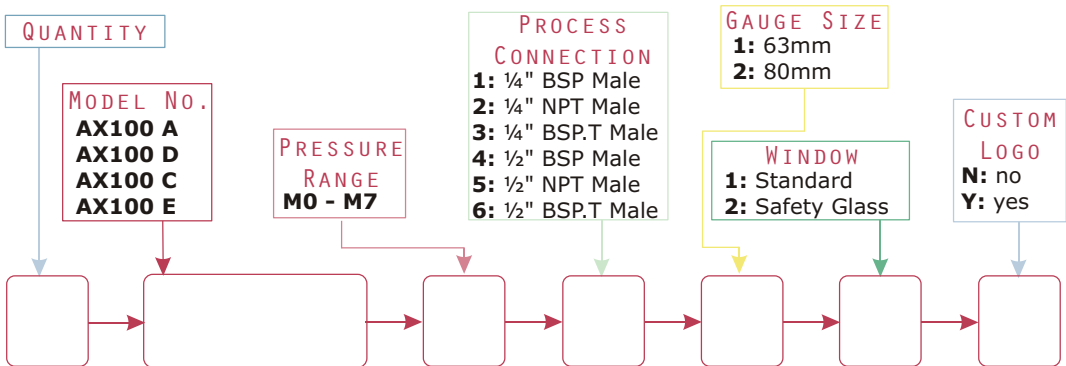
see section on connection positions for more details

Dimensions	ø 63mm	ø 80mm
d in mm	65	79
d1 in mm	63	79
L in mm	40 (type A) 38 (type D)	42
H in mm	85	102
h in mm	60	63
weight in kg	0.2	0.3



ORDERING MATRIX ~ AX100

Locate the order code for your specification and enter it into the appropriate box. See the above tables and the pressure codes reference section in the introduction for more details. Please note that some options may not be available with all models.



Can be fitted with **DS** **FS** **EC**

If you want this gauge to be fitted with any of these process components, go to the relevant section of the catalogue and copy your gauge's order number onto the appropriate data sheet. Then simply add the specifications for your component.