



# PCI2P SERIES FLOWMETERS

The PCI2P all-plastic, bearingless range of flowmeters is suitable for the measurement of both batch and continuous process flow in highly corrosive solutions such as nitric, sulphuric, hydrochloric and hydrofluoric acids. It is ideal for measuring aggressive and non-conductive liquids which have proven to be incompatible with most magnetic and mechanical flowmeters.

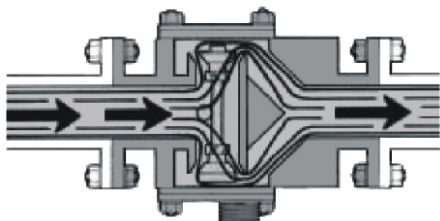
## Specifications

<b>Linearity: linear range</b>	+/- 0.5% (+/-1.0% for 15mm) of max.
<b>Linearity: overall range</b>	+/-1.0% of max.
<b>Repeatability</b>	+/-0.125% of reading
<b>Pressure Drop</b>	0.85 bar at maximum flow
<b>Body Connection</b>	Socket weld



## Operating Temp. & Pressure

Body Material	PVC	PVDF
<b>Temperature Ranges</b>	-10 - 600°C	-10 - 1100°C
<b>Max. Pressure (bar)</b>	200°C	8
	600°C	3
	1100°C	-
		5



The liquid flows through two turbines connected by a central shaft, spinning the shaft whilst it hovers. Magnets sealed in the rim of the lower turbine are detected by the sensor to generate pulses whose frequency is proportional to the flow rate.

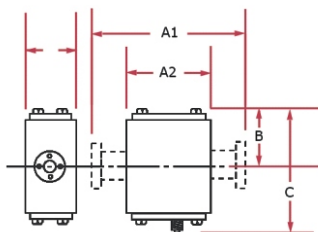
All wetted parts are either PVC or PVDF for maximum chemical resistance and seals are of PTFE or viton. The meter combines the advantages of a turbine flowmeter without the problems of bearing wear.

## Construction

<b>Body</b>	PVC or PVDF
<b>Cartridge carrier</b>	PVC or PVDF
<b>Measuring cartridge &amp; rotor</b>	PVC or PVDF
<b>Sealing Plates</b>	PVC or PVDF with 316 support
<b>Studs and nuts</b>	Stainless steel
<b>O rings</b>	Viton or PTFE

## Dimensions

Size (mm)	A1 (Flanged)	A2 (Socket)	B	C	D
15	150	85	55	150	64
25	200	115	65	170	70
40	250	150	90	220	125
50	280	180	105	250	125
80	430	245	160	340	190



## Options

<b>Body connection</b>	Stub flange with backing rings to ANSI 150, DIN 16 and BS10.
<b>Intrinsically Safe Model</b>	Pick-off coil, approved to ATEX II 1 G EEx ia IIC T5 with sine wave mV high frequency signal
<b>IS Pre-amplifier</b>	For transmission to safe area with sine wave current pulse 1.5-12mA output

Size (mm)	Cartridge material	Overall flow range (lit/min)	Linear flow range (lit/min)	Pulses /lit	Max. particle size (mm)
15	PVC	3.5 - 35	7-35	160	0.4
15	PVDF	4 - 35	7.5-35	160	0.4
25	PVC	10-110	22-110	83	1
25	PVDF	12-110	22-110	83	1
40	PVC	15-250	40-250	29	1.5
40	PVDF	18-250	50-250	29	1.5
50	PVC	35-440	85-440	17	2
50	PVDF	42-440	85-440	17	2
80	PVC	70-1000	220-1000	10.5	3
80	PVDF	85-1000	240-1000	10.5	3