



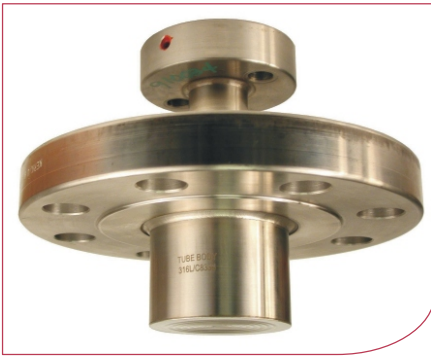
FLANGED DIAPHRAGM SEALS

EXTENDED FLANGED DIAPHRAGM SEAL

Extended flanged diaphragm seal assembly for use when the diaphragm needs to be offset from the flange such as when a thick wall may be present.

Standard Features

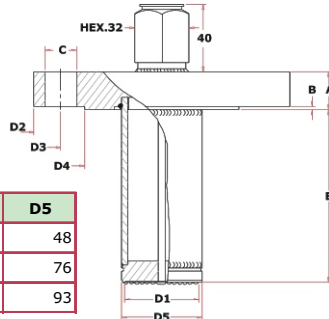
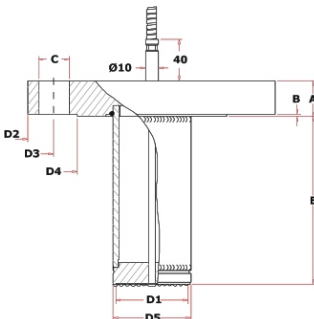
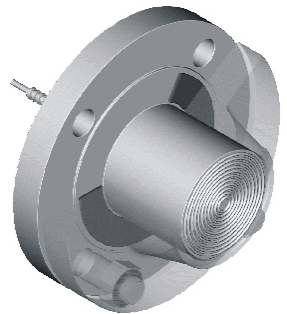
Process Connection Flanged	ASME	4" / 3"	3"	2"
	DIN	DN100/DN80	DN80	DN50
Diaphragm Size		89mm	72mm	44mm
Max. process pressure in bar at 20 °C		414	414	414
Min. span for GP & AP in mbar		80	200	1250
Min. span for DP in mbar		10	20	300
Min. pressure range for PI in bar		0.5	0.5	1.6
Max. capillary length in meter		15	15	10



Flange Standard	Standard	Options
ASME B16.5	size:	2"; 3"; 4"
	rating:	150; 300; 600 #
	facings:	raised face (RF)
	finish:	factory standard
DIN 2501	DN:	50; 80; 100
	PN:	10; 25; 40 bar
	form:	D, acc. DIN 2526
	finish:	factory standard
JIS	on request	

Wetted Parts	Standard	Options
Flange with extension	AISI-316 (L)	Hastelloy B2, Hastelloy C276, Inconel 600 / 686, Monel 400, Nickel 200, Titanium
Diaphragm	AISI-316 L	Hastelloy B2, Hastelloy C276, Inconel 600 / 686, Monel 400, Nickel 200, Tantalum, Titanium
Foil Jacket		Tantalum, Hastelloy, Monel

Construction	Standard	Options
Process Connection	Top-entry capillary	Side-entry capillary; ½" BSP Female
Capillary	Armoured st. steel	
Transmission Fill	TO -05	TO-23, TO-31, TO-41, TO-47



ASME	DIN	D5
2"	DN50	48
3"	DN80	76
4"	DN100	93

See appendix for all flange dimensions and pressure ratings. E, the height of the extension, must be specified (min. 10mm).

Seals ~
Flanged



FLANGED DIAPHRAGM SEALS

DP = differential pressure
GP = gauge pressure
AP = absolute pressure

Process Connection		Minimum Span (mbar)			Pressure Gauge Minimum Range (bar)		
Flange Size	Diaphragm Diameter (mm)	Transmitter Type			Gauge Diameter (mm)		
		GP	AP	DP	ø 63	ø 100	ø 160
2" / DN50	44	1250	1250	300	1.6	1.6	1.6
2" / DN50	57	600	600	100	0.6	0.6	0.6
3" / DN80	72	200	200	20	0.5	0.5	0.5
3" / DN80	89	80	80	10	0.5	0.5	0.5
4" / DN100	89	80	80	10	0.5	0.5	0.5

Effects of temperature on pressure readings per ±10 °C (in mbar)
 ~ measured from 20°C

Process Connection		Transmitter Type				Transmitter Type			
Flange Size	Diaphragm Diameter (mm)		DP	Seal	Capillary per metre	GP	AP	Seal	Capillary per metre
2" / DN50	44	0.2	1.24	2.28	1.9	1.9	4.9	10.35	
2" / DN50	57	0.15	0.66	0.63	1.7	1.7	2.65	3.9	
3" / DN80	72	0.1	0.24	0.2	0.55	0.55	0.95	1.2	
3" / DN80	89	0.04	0.09	0.08	0.19	0.19	0.39	0.4	
4" / DN100	89	0.04	0.09	0.08	0.19	0.19	0.39	0.4	



ORDERING MATRIX

Locate the order code for your specification and enter it into the appropriate box. See the Diaphragm Seals introduction and the tables on the previous page for more information about each component.

PROCESS CONNECTION

- FLANGE**
A: ASME 2"
B: ASME 3"
C: ASME 4"
D: DIN 50
E: DIN 80
F: DIN 100

- MATERIAL**
1: 316L St. Steel
2: Hastelloy B2
3: Hastelloy C276
4: Inconel 600
5: Inconel 686
6: Monel 400
7: Nickel 200
8: Titanium

- PRESSURE RATING**
1: 150#
2: 300#
3: 600#
4: 10 bar
5: 25 bar
6: 40 bar

DIAPHRAGM CONSTRUCTION

- MATERIAL**
1: 316L St. Steel
2: Hastelloy B2
3: Hastelloy C276
4: Inconel 600
5: Inconel 686
6: Monel 400
7: Nickel 200
8: Titanium
9: Tantalum

- LININGS/COATINGS**
1: Tantalum
2: Hastelloy
3: Monel 400

- DIAMETER**
A: 44mm
C: 72mm
D: 89mm

EXTENSION HEIGHT (E)
 (mm)

- TRANSMISSION FILL**
1: Standard
2: TO - 23
3: TO - 31
4: TO - 41
5: TO - 47

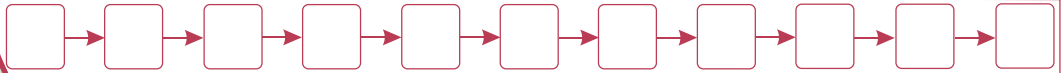
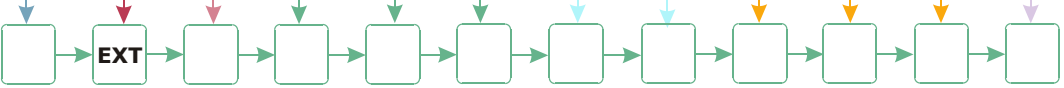
- CAPILLARY**
A: No
B: Side Entry
C: Top Entry

- CAPILLARY LENGTH**
A: 1m **D:** 3m **G:** 8m
B: 1.5m **E:** 4m **H:** 10m
C: 2m **F:** 6m **I:** 15m

- CERTIFICATES**
1: calibration test certificate
2: conformity certificate
3: material certificate
4: NACE certificate

QUANTITY

MODEL



Can be fitted to

PG TR PS

Select the instrument you want to have connected to this flanged seal and write in the complete order number in the empty matrix above. Together with the seal order number this completes the specifications for your instrument.