



CHEMICAL SEAL SYSTEMS

PLUG SERIES

The Plug or Screw-in diaphragm seal with a range of threaded male BSP process connections is ideal for corrosive or viscous fluids which might otherwise damage or clog the process connection of the measuring instrument.



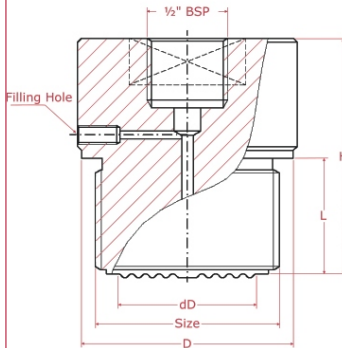
Dead-zone free because the diaphragm is flush, the plug seal range is suitable for mounting to pressure gauges and a range of pressure transmitters.

Standard Features	Standard Features	Options
Process Connection	1" BSP Male	½", 1½", 2" BSP Male
Process Connection Material	316L Stainless Steel	Hastelloy B2 & C276, Inconel 600, Monel 400, Nickel 200, Titanium
Diaphragm Material	316L Stainless Steel	Hastelloy B2 & C276, Inconel 600, Monel 400, Nickel 200, Tantalum; Coatings: Gold, Silver, Rhodium, Titanium, FEP, PFA, PVDF; PTFE lining; Dykor™
Instrument Connection	½" BSP Female	
Transmission Fill Fluid	TO - 05	TO - 23, TO - 31, TO - 41, TO - 47 (see introduction for more details)

Instrument Limitations

Process Connection			Minimum Ranges (bar) for Pressure Gauges						
Size	Diaphragm Diameter (mm)	Max. Pressure (bar)	Fluid Temp	ø 63 & ø 100			ø 160		
				Ambient Temp	-20° to +100°C	-40° to +150°C	-60° to +200°C	-20° to +100°C	-40° to +150°C
½" BSP	18	600		> 0 to +100	> 0 to +160	> 0 to +160	> 0 to +250	> 0 to +400	-
1" BSP	29	250		> 0 to +10	> 0 to +16	> 0 to +25	> 0 to +25	> 0 to +40	> 0 to +60
1½" BSP	44	160		> 0 to +1.6	> 0 to +2.5	> 0 to +2.5	> 0 to +4	> 0 to +4	> 0 to +6
1½" BSP	44	160		> -1 to +3	> -1 to +3	> -1 to +3	> -1 to +5	> -1 to +5	> -1 to +9
2" BSP	55	40		> 0 to +1	> 0 to +1	> 0 to +1	> 0 to +1	> 0 to +1	> 0 to +1.6
2" BSP	55	40		> -1 to 0	> -1 to 0	> -1 to 0	> -1 to 0	> -1 to 0	> -1 to 1.5

DIMENSIONS



Size	D	SW	H	L	dD
½" BSP	Ø20	SW25	50	20	18
1" BSP	Ø40	SW42	52	21	29
1½" BSP	Ø55	SW46	61	30	44
2" BSP	Ø68	SW55	66	35	55



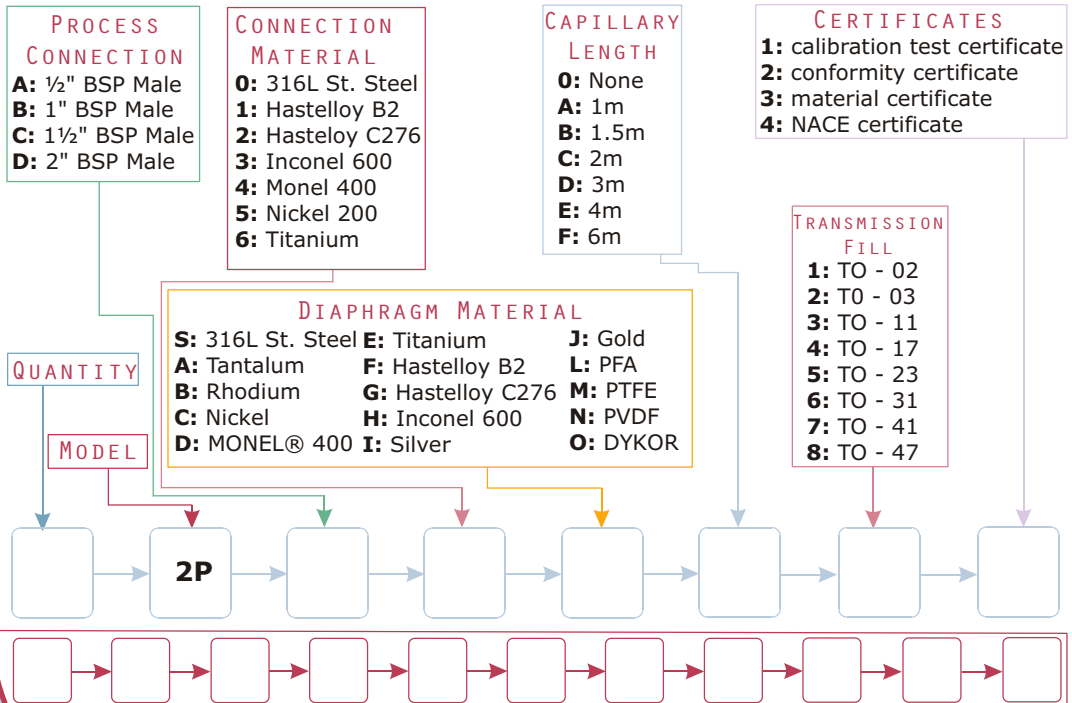
Effects of temperature on pressure readings per $\pm 10\text{ }^{\circ}\text{C}$ (in mbar)
 \sim measured from 20°C

Process Connection Size	TRANSMITTERS					GAUGES					
	Transmitter Type			Seal	Capillary / m	Diam (ϕ)	$\phi 63$	$\phi 100$	$\phi 160$	Seal	Capillary / m
	GP	AP	DP			Pressure (bar)	< 60	< 60	< 60		
1/2" BSP	90	-	-	150	800		150	600	-	150	800
1" BSP	25	-	-	-	-		150	600	-	25	160
1 1/2" BSP	5	5		5	10.35		13	52	90	7.2	15
1 1/2" BSP			0.05	1.24	2.28						
2" BSP	1.7	1.7		2.65	3.9		9	38	25	5.3	10
2" BSP			0.15	0.66	0.63						



ORDERING MATRIX

Locate the order code for your specification and enter it into the appropriate box. See the Diaphragm Seals introduction and the tables on the previous page for more information about each component.



Can be fitted to **PG TR PS**

Select the instrument you want to have connected to this seal and write in the complete order number in the empty matrix above. Together with the seal order number this completes the specifications for your instrument.