



HYGEIA INLINE

The Hygeia Inline is a cylindrical diaphragm seal with hygienic connections for inline mounting for use in the food and pharmaceutical industries particularly in situations where the process medium is viscous or fast-flowing.

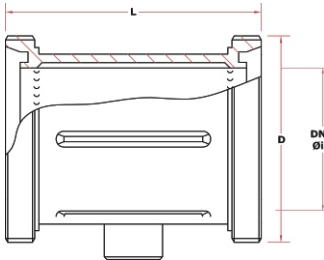
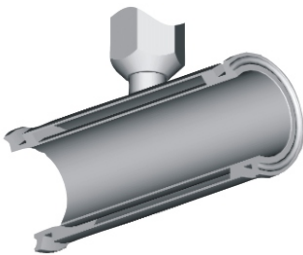
With its stainless steel body and high quality, laser-welded, volume-optimised stainless steel diaphragm the Hygeia Inline seal delivers dead-zone free pressure measurement which can be transmitted to pressure gauges, transmitters or switches.



The Hygeia Inline is available with a variety of hygienic connections: screwed DIN 11851 and IDF ISO 2853 or Triclamp connection ISO 2852.

Process Standard / Connection Size	Imp. DIN	1" DN25	1½" DN40	2" DN50	2½" DN65	3" DN80	4" DN100
Max. Process Pressure	DIN 11851	40	40	25	25	25	25
	Triclamp	16	16	16	16	16	16
	IDF	10	25	25	25	25	25
Min. Span for GP & AP (mbar)		10	10	1.6	1.6	0.5	0.5
Min. Span for DP (mbar)		-	-	-	0.8	0.8	0.25
Min. Pressure Range for PI (bar)		2.5	2.5	1.6	1.6	0.6	0.6
Max. Capillary Length (metre)		6	6	6	10	15	15
Min./Max. Process Temperature (°C)		-30 / +180	-30 / +180	-30 / +180	-30 / +180	-30 / +180	-30 / +180

Feature	Standard	Options
Process Connection	DIN 11851 screw	ISO 2853 screw, ISO 2852 clamp
Diaphragm	AISI 316L St. Steel	
Body	AISI 316L St. Steel	
Instrument Connection	½" BSP Female	Welded
Transmission Fill	TO - 05	TO - 01, TO - 03, TO - 11, TO - 17
Capillary	Armoured stainless steel	



HYGIENIC CONNECTION DIMENSIONS

DIN 11851

Triclamp ISO 2852

IDF / ISO 2853

DN	(Øi)	Thread (Rd)	L
25	26	52 x 1/6	120
32	32	58 x 1/6	120
40	38	65 x 1/6	120
50	50	78 x 1/6	122
65	66	95 x 1/6	124
80	81	110 x 1/4	132
100	100	130 x 1/4	60

DN	D	L
1"	25.4	126
1 ½"	38	126
2"	51	126
2½"	63.5	131
3"	76.1	131
4"	101.6	60

DN	D	Thread (Tr)	L
1"	25.4	37 x 3.175	110
1 ½"	38	50.5 x 3.175	110
2"	51	64 x 3.175	110
2½"	63.5	77.5 x 3.175	110
3"	76.1	91 x 3.175	60
4"	101.6	118 x 3.175	60

Instrument Limitations

Process Connection		Minimum Span (mbar)			Pressure Gauge Minimum Range (bar)		
		Transmitter Type			Gauge Diameter (mm)		
Imp.	DIN	GP	AP	DP	ø 63	ø 100	ø 160
1 - 1½"	DN25-40	10	10		10	10	
2 - 2½"	DN50	1.6	1.6	0.8	1.6	1.6	
3 - 4"	DN80-100	0.5	0.5	0.25	0.5	0.5	0.5

**Effects of temperature on pressure readings
per ±10 °C (in mbar) ~ measured from 20°C**

Process Connection		Transmitters					Gauges					
Imp.	DIN	GP	AP	DP	Seal	Capillary / m	Pressure (mbar)	Gauge Diameter			Seal	Capillary / m
								ø 63	ø 100	ø 160		
1 - 1½"	DN25-40	20	20		35	140	< 40	190			35	140
2 - 2½"	DN50	5	5		15	30	< 40	40	150		15	30
2 - 2½"	DN50			0.2	4.2	5						
3 - 4"	DN80-100	1	1		5	25	< 40	4	20	24	5	25
3 - 4"	DN80-100			0.2	1	1						

DP = differential pressure GP = gauge pressure AP = absolute pressure



ORDERING MATRIX

Locate the order code for your specification and enter it into the appropriate box. See the Diaphragm Seals introduction and the tables above for more information about each component.

PROCESS CONNECTION

CONNECTION
TYPE

- A:** DIN 11851 screw
- B:** IDF ISO2853 screw
- E:** Triclamp ISO2852

CONNECTION
SIZE

- A:** DN25 **1:** 1"
- B:** DN40 **2:** 1½"
- C:** DN50 **3:** 2"
- D:** DN65 **4:** 2½"
- E:** DN80 **5:** 3"
- F:** DN100 **6:** 4"

CAPILLARY

LENGTH

- O:** None
- A:** 1m
- B:** 1.5m
- C:** 2m
- D:** 3m
- E:** 4m
- F:** 6m
- G:** 9m
- H:** 12m
- I:** 15m

CERTIFICATES

- 0:** None
- 1:** calibration test certificate
- 2:** conformity certificate
- 3:** material certificate
- 4:** NACE certificate

FILL FLUID

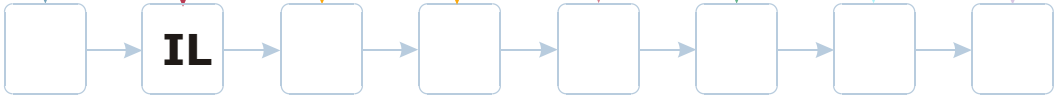
- 1:** Standard
- 2:** TO - 01
- 3:** TO - 03
- 4:** TO - 11
- 5:** TO - 17

INSTRUMENT CONNECTION

- A:** Standard
- B:** Welded

QUANTITY

MODEL NO



Can be fitted to

PG TR PS

Select the instrument you want to have connected to this seal and write in the complete order number in the empty matrix above. Together with the seal order number this completes the specifications for your instrument.